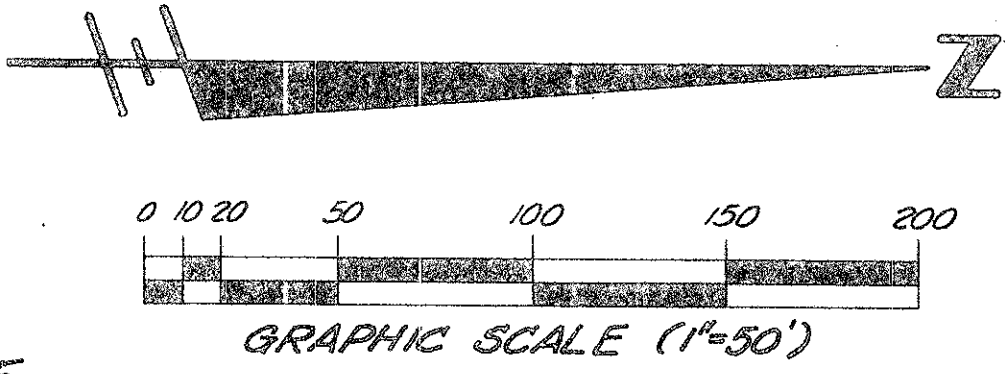


44/26

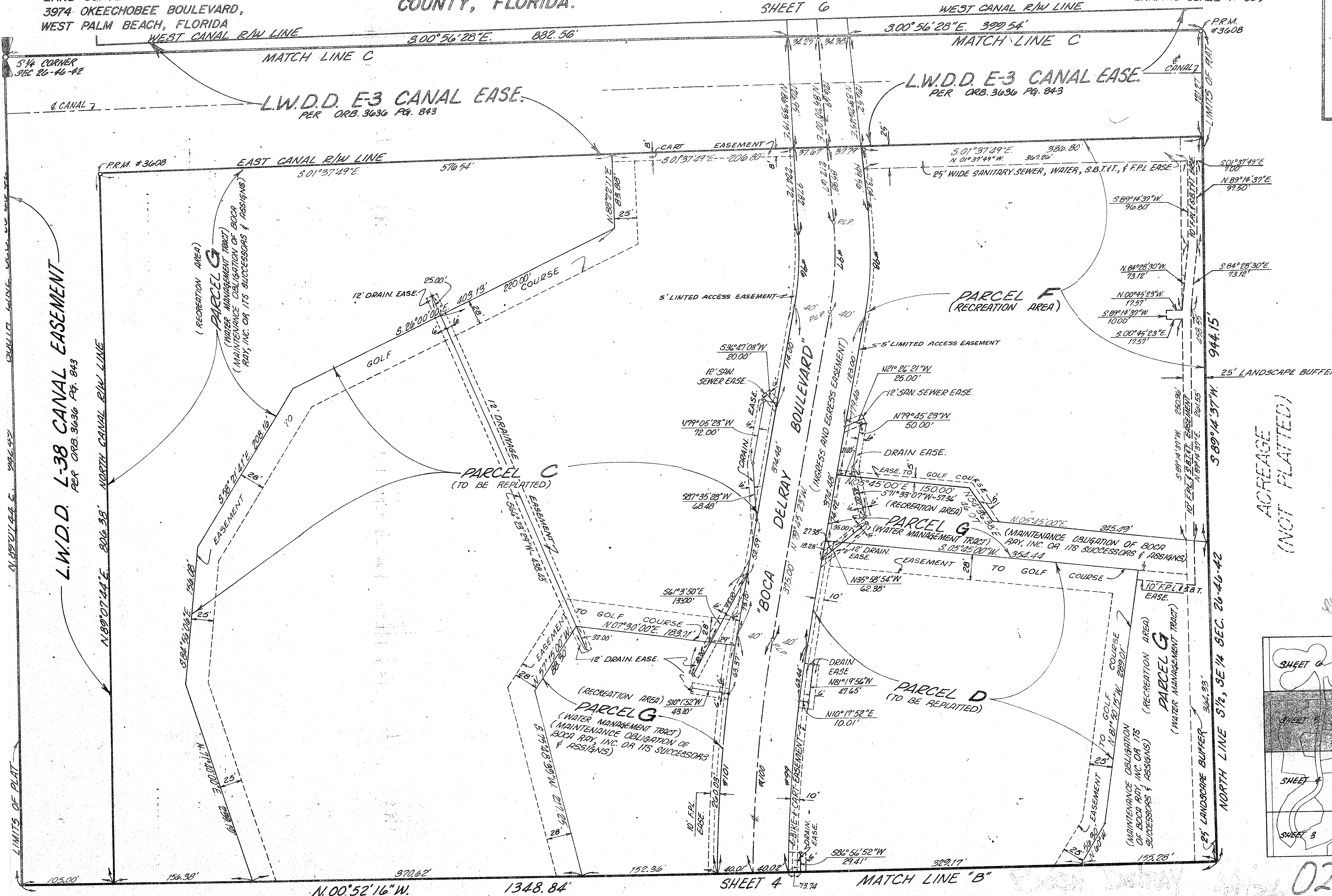
THIS INSTRUMENT PREPARED UNDER THE DIRECTION OF JOHN H. FITSCHEN CRAVEN THOMPSON & ASSOCIATES, INC. LAND SURVEYORS · CIVIL ENGINEERS 3974 OKEECHOBEE BOULEVARD, WEST PALM BEACH, FLORIDA

BOCA DELRAY, A P.U.D. A PORTION OF SECTION 26, TOWNSHIP 46 SOUTH, RANGE 42 EAST, PALM BEACH COUNTY, FLORIDA.

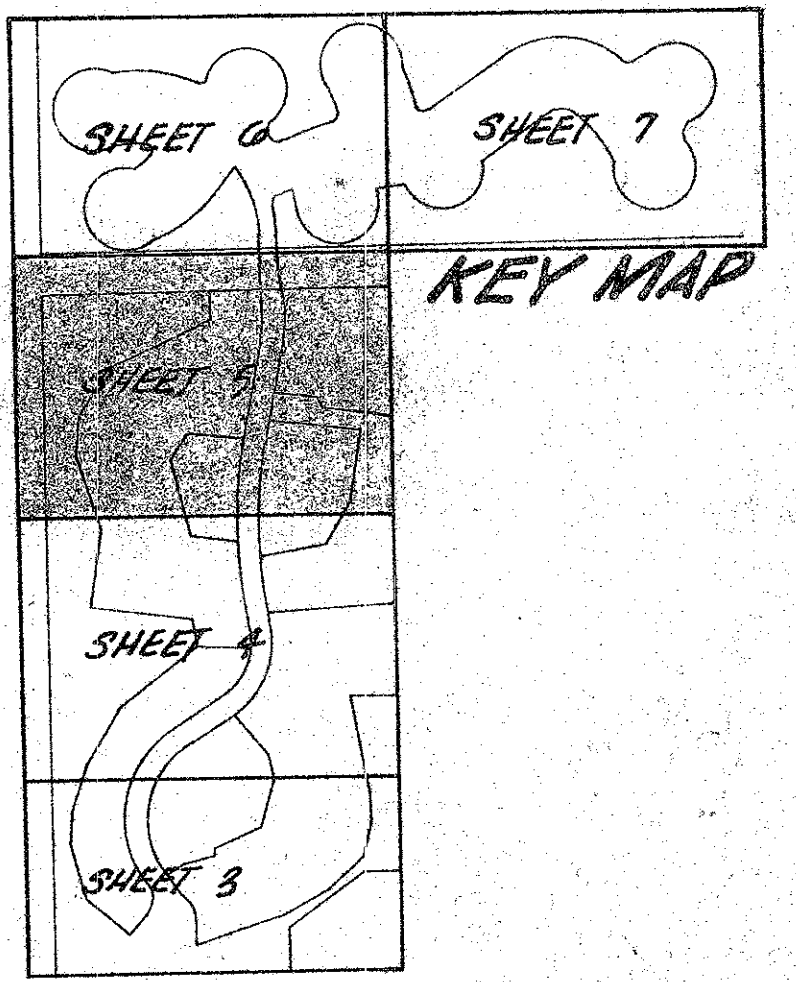


26

SHEET 6



ACREAGE (NOT PLATTED)



As proposed for RS-PUD per Plat 0206-000 4-29-82 Plat 81-131

0206-000 SHEET 5 OF 7 SHEETS